



A2-12/14 Stage 1 Kit Contents

Applies to A2-12 and A2-14 Kit Sets

Rev A - Last Updated Dec 5, 2023

Table of Contents

Table of Contents	1
Overview	2
Terminology	2
1.0 - Primary Hull Package	2
1.1 Standard - Solid Low Windscreen Package	2
1.1 Upgrade 1 - See-Through Low Windscreen Package	3
1.1 Upgrade 2 - High Windscreen Package	3
1.2 Standard - Standard Bow Kit	3
1.2 Upgrade - Dropped Bow Kit	3
1.3 Standard - Standard Bottom Kit	4
1.3 Upgrade - 3/8" Keel Kit	4
1.4 Add-On - Centre Stringer Package	4
2.0 Add-On - Interior Package	4
2.1 - Engine Cover Hinge Kit	4
2.2 - Engine Cover Strut Kit	4
2.3 - Floor Hardware Kit	5
2.4 - Front Seat Box Kit	5
2.5 - Kick Plate Kit	5
2.6 Standard - Flat Back Engine Cover	5
2.6.1 Standard (A2-14 Only) - Rear Bench Seat Box Kit (Adds 3 Seats)	5
2.6 Upgrade - Integrated 2 Seat Engine Cover (Adds 2 Seats)	6
3.0 Add-On - Swim Ladder Package	6
3.1 - Swim Ladder Hardware Kit	6
4.0 Add-On - UHMW Package	6
5.0 Add-On - Intake Package	7
5.1 Standard - Fixed, Standard Profile Intake Grate	7
5.1 Upgrade 1 - Fixed, Performance Profile Intake Grate	7
5.1 Upgrade 2 - Stomp Actuated, Standard Profile Intake Grate	7
5.1 Upgrade 3 - Stomp Actuated, Performance Profile Intake Grate	8

Overview

This document outlines all components included or optionally available for the Minijet A2-12 / A2-14 Stage 1 Kit.

Terminology

Standard - The default package configuration included with a kit

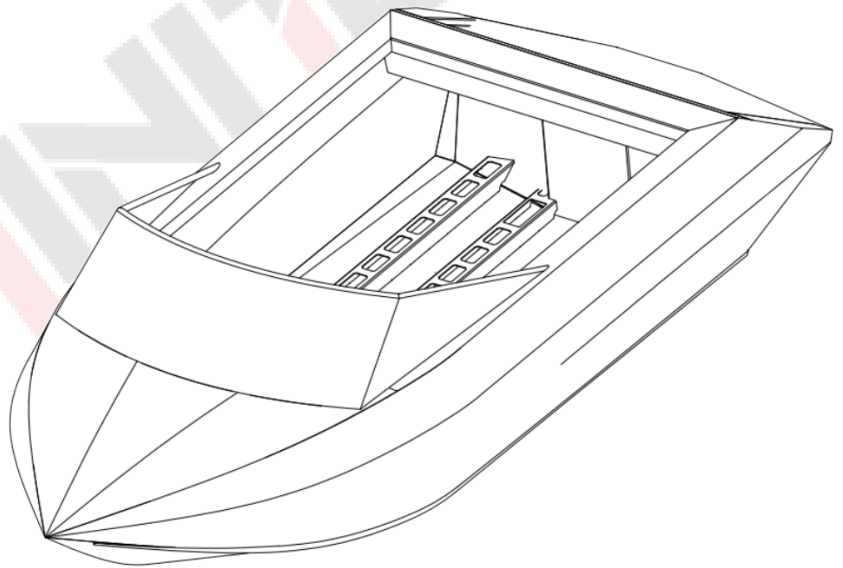
Upgrade - Optional upgrade package which replaces the standard package

Option - Optional add-on package

SS - Stainless Steel

1.0 - Primary Hull Package

- QTY 1 - Left Side Panel
- QTY 1 - Right Side Panel
- QTY 1 - Transom Cubby
- QTY 1 - Left Transom Pane
- QTY 1 - Right Transom Panel
- QTY 1 - Rear Fascia
- QTY 1 - Swim Deck
- QTY 1 - Left Swim Deck Edge
- QTY 1 - Right Swim Deck Edge
- QTY 1 - Wing Panel
- QTY 1 - Mini Bulkhead
- QTY 1 - Left Inboard Stringer
- QTY 1 - Right Inboard Stringer
- QTY 1 - Left Outboard Stringer
- QTY 1 - Right Outboard Stringer
- QTY 2 - Pump Guard
- QTY 2 - Front Strake Extrusion
- QTY 2 - Rear Strake Extrusion
- QTY 2 - Chine Cap Extrusion



1.1 Standard - Solid Low Windscreen Package

- QTY 1 - Solid Windscreen Panel
- QTY 1 - Windscreen Top Tube
- QTY 2 - Windscreen Side Tube
- QTY 1 - Low Windscreen Dash

1.1 Upgrade 1 - See-Through Low Windscreen Package

- QTY 1 - Pre-Marked Windscreen Panels
- QTY 1 - Windscreen Top Tube
- QTY 2 - Windscreen Side Tube
- QTY 1 - Low Windscreen Dash
- QTY 1 - Front Window
- QTY 2 - Side Window
- QTY 100 - 10-24 SS Locking Nut
- QTY 100 - 10-24 x 0.75" SS Countersunk Bolt
- QTY 100 - No. 10 SS Washer

1.1 Upgrade 2 - High Windscreen Package

- QTY 1 - High Windscreen Dash
- QTY 1 - Dash Step
- QTY 1 - Left Windscreen Panel
- QTY 1 - Right Windscreen Panel
- QTY 1 - Windscreen Centre Door
- QTY 2 - Windscreen Side Panel Support Tube
- QTY 2 - Weld-On Hinge
- QTY 1 - Rubber Door Latch
- QTY 1 - Centre Front Window
- QTY 2 - Outer Front Window
- QTY 2 - Side Window
- QTY 1 - Centre Front Window Gasket
- QTY 2 - Outer Front Window Gasket
- QTY 2 - Side Window Gasket

1.2 Standard - Standard Bow Kit

- QTY 1 - Standard Front Deck

1.2 Upgrade - Dropped Bow Kit

- QTY 1 - Dropped Bow Front Deck
- QTY 2 - Dropped Bow Side Panel
- QTY 1 - Dropped Bow Front Panel
- QTY 1 - Dropped Bow Back Panel
- QTY 2 - Dropped Bow Drain Tubes

1.3 Standard - Standard Bottom Kit

- QTY 1 - Rear Bottom Panel
- QTY 2 - Front Bottom Tab

1.3 Upgrade - 3/8" Keel Kit

- QTY 1 - 3/8" Bottom Rear Centre Plate
- QTY 2 - Rear Bottom Side Panels
- QTY 2 - Front Bottom Tab

1.4 Add-On - Centre Stringer Package

- QTY 1 - Middle Reinforcing Stringer
- QTY 2 - Outer Reinforcing Stringer
- QTY 2 - Centre Stringer Cross Brace

2.0 Add-On - Interior Package

- QTY 1 - 5' X 12' X 3/4" Coosa Sheet
- QTY 1 - Left Side Closeout Panel
- QTY 1 - Right Side Closeout Panel

2.1 - Engine Cover Hinge Kit

- QTY 2 - Hinge
- QTY 2 - Backing Plate
- QTY 8 - 10-24 x 1.75 SS Bolt
- QTY 8 - 10-24 x 0.75 SS Bolt
- QTY 16 - 10-24 SS Lock Nut

2.2 - Engine Cover Strut Kit

- QTY 1 - 30 lb Gas Strut
- QTY 2 - 5/16"-18 SS Ball Stud
- QTY 2 - 5/16"-18 SS Lock Nut
- QTY 1 - Mounting Bracket
- QTY 1 - Load Distribution Plate
- QTY 4 - 10-24 x 1.5" SS Countersunk Bolt
- QTY 4 - No. 10 SS Washer
- QTY 4 - 10-24 SS Lock Nut

2.3 - Floor Hardware Kit

- QTY 10 - No. 12 x 1.5" SS Self Tapping Countersunk Screw
- QTY 10 - No. 12 SS Cup Washer
- QTY 5 - Floor Supports
- QTY 8 - Floor Supports

2.4 - Front Seat Box Kit

- QTY 2 - Standard Single Seat Box
- QTY 2 - Left Seat Mount
- QTY 2 - Right Seat Mount
- QTY 8 - 3/8"-16 x 1" SS Bolt
- QTY 8 - 3/8" SS Washer
- QTY 8 - 1/4" Weld-in Seat Box Mounting Pad

2.5 - Kick Plate Kit

- QTY 1 - Kick Plate Face
- QTY 4 - Kick Plate Tube
- QTY 2 - Kick Plate Mount
- QTY 4 - 1/4"-20 x 1.75" SS Bolt
- QTY 4 - 1/4"-20 SS Lock Nut
- QTY 8 - 1/4" SS Washer

2.6 Standard - Flat Back Engine Cover

- QTY 1 - Flat-Back Engine Cover Structure
- QTY 2 - Engine Cover Latch
- QTY 11 - 1/4"-20 x 1" SS Bolt
- QTY 7 - 1/4"-20 SS Lock Nut
- QTY 18 - 1/4" SS Washer
- QTY 1 - 4' X 8' X 1/2" Coosa Sheet
- QTY 8 - Universal Tab
- QTY 12 - 1/4"-20 x 1.25" SS Bolt
- QTY 12 - 1/4" SS Fender Washer
- QTY 12 - 1/4" SS Washer
- QTY 12 - 1/4"-20 Lock Nut

2.6.1 Standard (A2-14 Only) - Rear Bench Seat Box Kit (Adds 3 Seats)

- QTY 1 - Double Seat Box Base
- QTY 2 - Double Seat Box Side Panel

- QTY 1 - Left Seat Mount
- QTY 1 - Right Seat Mount
- QTY 4 - 3/8"-16 x 1" SS Bolt
- QTY 4 - 3/8" SS Washer
- QTY 4 - 1/4" Weld-in Seat Box Mounting Pad

2.6 Upgrade - Integrated 2 Seat Engine Cover (Adds 2 Seats)

- QTY 1 - Integrated Seat Engine Cover Structure
- QTY 1 - Engine Cover Latch
- QTY 7 - 1/4"-20 x 1" SS Bolt
- QTY 7 - 1/4"-20 SS Lock Nut
- QTY 14 - 1/4" SS Washer
- QTY 1 - Left Seat Back
- QTY 1 - Right Seat Back
- QTY 1 - Left Seat Bucket
- QTY 1 - Right Seat Bucket
- QTY 1 - Kick Panel
- QTY 1 - Front Panel
- QTY 1 - Engine Cover Structure
- QTY 1 - 3" X 12" X 1/4" Plate Seat Anchor
- QTY 2 - 3" X 6" X 1/4" Plate Seat Anchor
- QTY 7 - 1/4"-20 x 0.75 SS Bolt

3.0 Add-On - Swim Ladder Package

- QTY 1 - Swim Ladder
- QTY 1 - Swim ladder Pocket
- QTY 2 - Swim Ladder Stops

3.1 - Swim Ladder Hardware Kit

- QTY 4 - 3/8" SS Washer
- QTY 2 - 3/8"-24 x 1" SS Bolt
- QTY 2 - 3/8" Nylon Washer
- QTY 2 - 3/8"-24 SS Thin Lock Nut

4.0 Add-On - UHMW Package

- QTY 2 - 4' x 10' x 1/2" UHMW Sheet - Rough Cut To Fit Hull Size
- QTY 150 - 5/16"-18 x 2" SS Countersunk Bolt

- QTY 150 - 5/16"-18 x 1.25" SS Countersunk Bolt
- QTY 300 - 5/16" SS Rubber Backed Sealing Washers
- QTY 300 - 5/16"-18 Lock Nut

5.0 Add-On - Intake Package

- QTY 1 - Tube of Sikaflex Marine Sealant
- QTY 1 - PWC Specific Intake Housing
- QTY 1 - PWC Specific Intake Base
- QTY 1 - PWC Specific Pump Adaptor Plate
- QTY 4 - M10x1.5 35L SS Socket Head Bolt
- QTY 2 - Drain Plug
- QTY 8 - M10x1.5 35L SS Hex Bolt
- QTY 8 - M10 SS Split Locking Washers

5.1 Standard - Fixed, Standard Profile Intake Grate

- QTY 1 - Fixed, Standard Profile Intake Grate
- QTY 2 - 5/16"-18 x 1" SS Hex Head Bolt

5.1 Upgrade 1 - Fixed, Performance Profile Intake Grate

- QTY 1 - Fixed, Performance Profile Intake Grate
- QTY 1 - 5/16"-18 x 1" SS Hex Head Bolt

5.1 Upgrade 2 - Stomp Actuated, Standard Profile Intake Grate

- QTY 1 - Hinged, Standard Profile Intake Grate
- QTY 1 - Stomp Grate Actuator Rod
- QTY 1 - Stomp Grate Spring Mount
- QTY 1 - Stomp Grate UHMW Slider
- QTY 1 - Stomp Grate Foot Bar
- QTY 1 - Stomp Grate Threaded Clevis
- QTY 1 - Stomp Grate Spring
- QTY 1 - 5/8"-18 SS Jam Nut
- QTY 1 - 5/8" SS Split Locking Washer
- QTY 1 - 5/16"-18 x 1" SS Hex Bolt
- QTY 1 - 1/4"-20 x 1.25" SS Button Head Cap Screw
- QTY 1 - 1/4"-20 SS Locking Nut
- QTY 1 - 1/4" SS Flat Washer

5.1 Upgrade 3 - Stomp Actuated, Performance Profile Intake Grate

- QTY 1 - Hinged, Performance Profile Intake Grate
- QTY 1 - Stomp Grate Actuator Rod
- QTY 1 - Stomp Grate Spring Mount
- QTY 1 - Stomp Grate UHMW Slider
- QTY 1 - Stomp Grate Foot Bar
- QTY 1 - Stomp Grate Threaded Clevis
- QTY 1 - Stomp Grate Spring
- QTY 1 - 5/8"-18 SS Jam Nut
- QTY 1 - 5/8" SS Split Locking Washer
- QTY 1 - 5/16"-18 x 1" SS Hex Bolt
- QTY 1 - 1/4"-20 x 1.25" SS Button Head Cap Screw
- QTY 1 - 1/4"-20 SS Locking Nut
- QTY 1 - 1/4" SS Flat Washer

